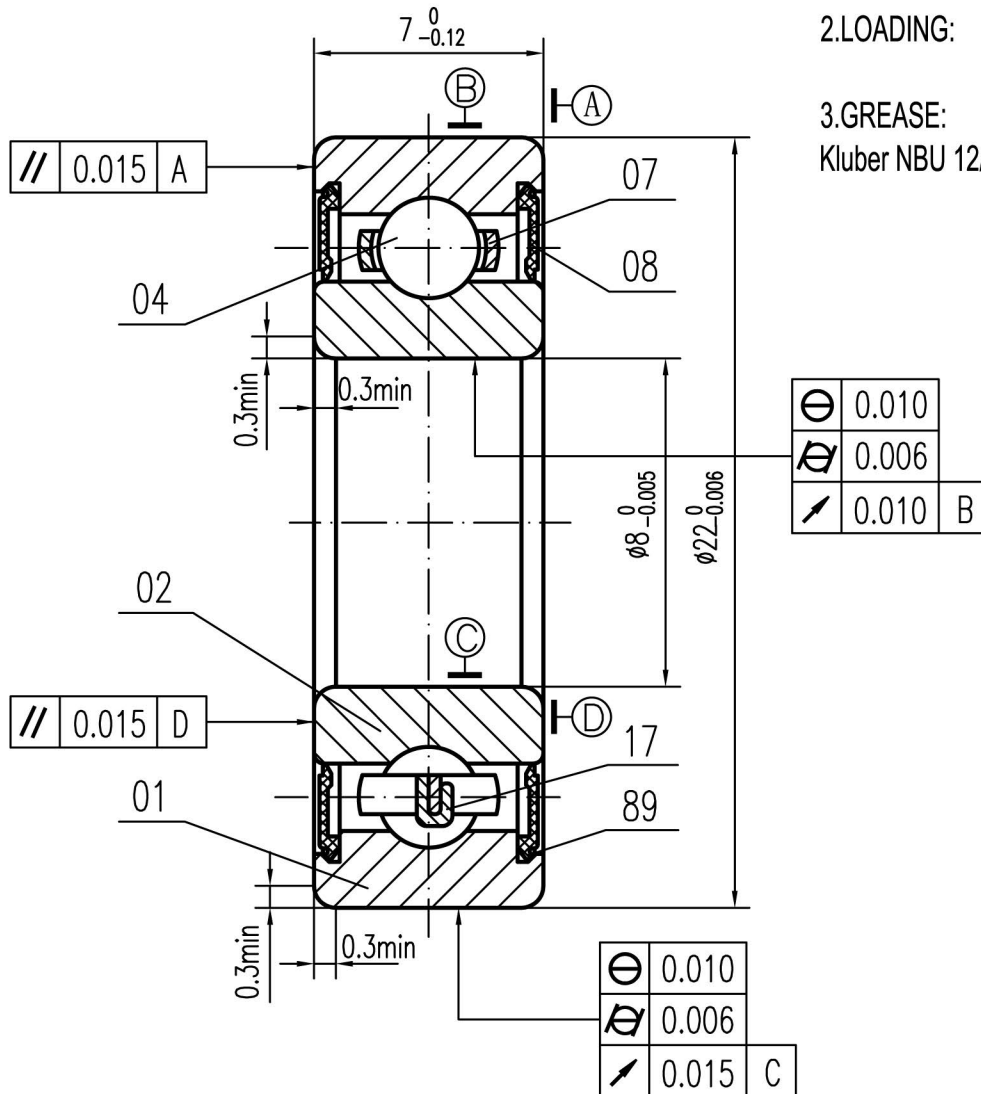



SMR608C 2YS C3 #5 NB2



- 1. CLEARANCE: Min 0.008 mm
Max 0.023 mm
- 2. LOADING: Cr=3295N
Cor=1368N
- 3. GREASE:
Kluber NBU 12/300 KP

PART NO.	PART	QTY	MATERIAL	REMARK
68	SEAL	2	NBR	YELLOW
17	CAGE	1	AISI 304	
07	CAGE	1	AISI 304	
04	CERAMIC BALL	7	Si3N4	Sø3.969
02	INNER RING	1	AISI 440	
01	OUTER RING	1	AISI 440	
STAINLESS STEEL DEEP GROOVE BALL BEARING				
SMR608C 2YS C3 #5 NB2				
 <small>Miniature Bearings For Industry, Hobby & Recreation Phone: (800) 353-3256 Email: info@bocabearings.com</small>				